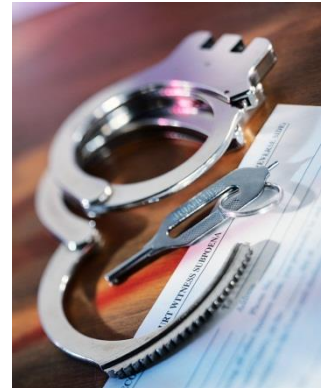


Kentucky Extension Agent Home/Farm Visit Safety Guidelines

Why are we talking about this subject?

- 1) All communities have been touched by violence.
- 2) Many rural communities have seen increased illegal drug activity.
- 3) Agent/Assistant safety is of utmost importance!



1) Always discuss potential visits with other agents and support staff

2) Ask someone else to go with you.

What can I do to protect myself?



3) Always tell support staff where you are going. Call when there are changes to your schedule.

4) Ask home/farm owner to bring samples to office for diagnoses.

What can I do to protect myself?



5) Plan visit during daylight hours. Park in a well lit, easily accessible area and lock vehicle.

6) Keep cell phone available and properly charged.

What can I do to protect myself?



7) Make sure vehicle is in good repair, with at least $\frac{1}{2}$ tank of fuel.

8) Ask home/farm owner about any dogs or other animals that may present a threat.

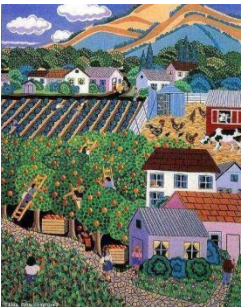
What can I do to protect myself?



9) Be aware of your surroundings. Trust your instincts. If you feel uncomfortable, politely excuse yourself.

- a) Ask support staff to call you at a prearranged time.
- b) Tell home/farm owner you have another appointment.
- c) At the conclusion of a night meeting, ask another employee or trusted volunteer to remain until all clients have left.

What can I do to protect myself?



10) Do not enter a yard/home when:

- a) You do not know the home/farm owner well.
- b) Questionable persons are present
- c) Homeowners are intoxicated
- d) Dangerous animals are present
- e) Never accept food or beverages from someone you do not know well.

What can I do to protect myself?



11) Useful items to include in a personal emergency kit

- a) Cell phone and charger
- b) Emergency #'s and contact information
- c) Small amount of money and change
- d) Plastic trash bags
- e) Disinfectant wipes and hand cleaner
- f) Latex gloves
- g) First Aid Kit
- h) Pepper Spray

What can I do to protect myself?



Kentucky Extension Agent Home/Farm Visit Safety Guidelines

References:

Oklahoma State University Extension, Home Visitation Leadership Advisory Coalition.

Indiana Department of Child Services, Home Visit Safety Protocol.

Safety Tips for Home Visitors: Planning for a Safe Home Visit, Pittsburg Bureau of Police, Allegheny County Health Department.

Home Visitation Safety Module, Kentucky Public Health Leadership Institute.